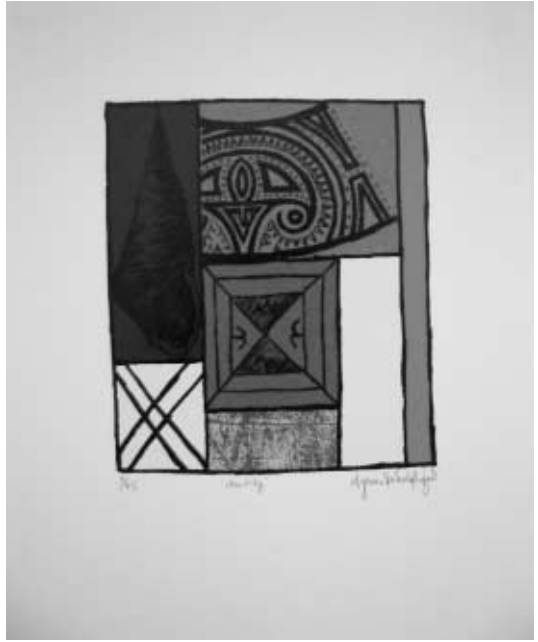


Stand 20

Exhibiting Artists

John Drawbridge
Lonnie Hutchinson
Rodney Fumpston
Marilynn Webb
Clive Humphreys
Dagmar Dyck
Alexis Neal
Michel Tuffery
Sheyne Tuffery
Josephine Do
Imogen Tunncliffe
Tom Burnett
Cynthia Taylor
Vivian Ward
Jo Ogier
Tracey Williams
Pippa Blake
Lyn Taylor
Liam Davidson
Faith McManus



Dyck Dagmar, "Identity" 3/45, 2001, Screenprint, 18 x 22cm

Opening Hours Monday to Friday 10am - 6pm, Saturday 10am - 4pm

Representatives

Linda Chalmers, Graham Shoebridge

12 O'Connell St, Auckland New Zealand

Tel +64 9 302 5295 Fax +64 9 300 3125

Email lane.gallery@xtra.co.nz Website www.lanegallery.co.nz

The Lane Gallery specialises in contemporary works from New Zealand and the Pacific Rim. Since opening over 12 years ago primarily as a gallery specialising in works on paper, it now also exhibits paintings and sculpture. The emphasis is on imagery reflective of New Zealand, the Pacific, Maori heritage and Asian influences.

The gallery is interested in supporting younger emerging artists as well as those who are more established and operates a regular exhibition programme.

Located in Auckland, just off the main shopping street, Queen Street, you reach the gallery by walking up Vulcan Lane.

The Lane Gallery